

**\$1049 / 2br - 806ft<sup>2</sup> - Super Cute 2 Bedroom in a Great Location! Call Today! (Mt Scott / SE Portland)**



8860 se flavel street

[\(google map\)](#)

**2BR / 1Ba 806ft<sup>2</sup> available apr 16**

cats are OK - purrr  
dogs are OK - woof  
apartment  
laundry on site  
off-street parking

If You Are Looking For A 2 Bedroom that is Affordable, Well Maintained, Tranquil, and Great Residents to have as Neighbors, THIS IS A MUST SEE!

All Updated 2 Bedroom in a Relaxing, Park Like Setting, Huge Living Room, Pantry in Kitchen, 5-Star Maintenance, Seasonal Pool, Two Spotless On-Site Laundry Centers, Easy I-205 Access, Assigned Parking In Front of Your Apartment, On Bus Line, Minutes to the Max Green Line and Near Bike/Walking Trails! Water/Sewer/Garbage All Included.

Our goal is to provide superior service and an exceptional apartment home at a price that is affordable.

Ten Reasons To Make The Timber Grove Your New Home!

- ~Tranquil Park-Like Setting
- ~Convenient Location; walk to the Max Green Line
- ~Small Pets are Welcomed
- ~On-site Laundry Centers
- ~Great On-Site Manager
- ~Superior Maintenance Staff
- ~Relaxing Seasonal Pool
- ~Off Street Parking
- ~Spacious Updated Apartments
- ~Water/Sewer & Garbage All Paid!

Pets Welcome: Under 25lbs

Rent: Starts At Just \$1049

Deposit: \$300 With Your GREAT Credit!

Call today to see all that we have to offer! [show contact info](#)

Like us on Facebook for photos of this great home and community updates!

<https://www.facebook.com/TimberGroveApartments>

Equal Housing Opportunity.

Keywords: SE Portland, SE PDX, SE, Southeast, Mt. Scott, Scott, Clackamas, Multnomah, Clackamas Town Center, Mall 205, I-205, Milwaukie, Lents, Home

**\$1275 / 2br - 838ft<sup>2</sup> - Adorable 2 bedroom Lents Cottage w/  
Attached Garage, Corner Lot(5910 SE 101st Avenue)**



[\(google map\)](#)

**2BR / 1Ba 838ft<sup>2</sup> available now**

cats are OK - purrr  
dogs are OK - woof  
house  
w/d hookups  
attached garage

# Adorable 2 bedroom Lents Cottage w/Attached Garage, Corner Lot

## Property Address

5910 SE 101st Avenue | Portland, OR 97266

Available: Now

## Offered By

Rental Management Services, Inc. | [show contact info](#)

## Description

This sweet two bedroom home with fresh remodels features:

- Carpet and laminates throughout
- Roomy living room
- Updated kitchen with modern amenities and new counters
- Dining room with built-in shelving
- Ceiling fan
- Open cubicle shelves between kitchen and living room for a modern decorative touch
- Attached one car garage
- Spacious backyard
- 10 min walk to Max
- Easy access to I-205
- Walk/bike to Beggars Wildlife Refuge, Bloomington Park, and shops & eateries on SE Foster Rd

No Smoking, Pets Negotiable

## Details

- Beds/Baths: 2BD/1.0BA
- Square Feet: 838

## Rental Terms

- Rent: \$1,275.00
- Available: Now
- Application Fee: \$50.00
- Security Deposit: \$1,000.00



## \$1325 / 638ft<sup>2</sup> - Studio Condo At The John Ross (Portland)



**0BR / 1Ba 638ft<sup>2</sup> available now**

condo

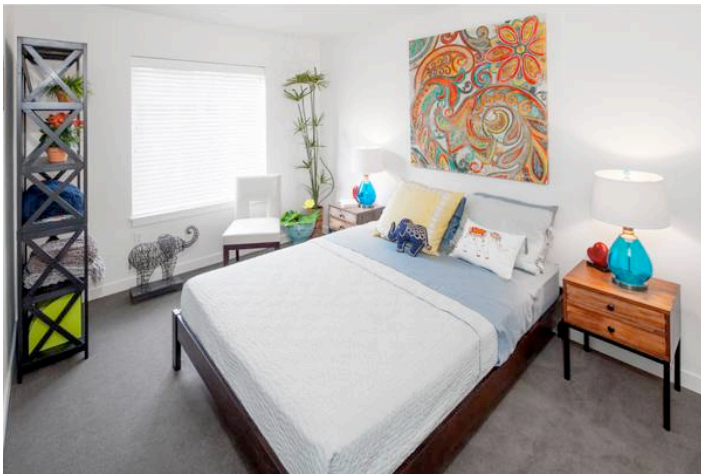
w/d in unit

15th Floor with fantastic river and SW Hills views from the John Ross building in the South Waterfront district. Studio unit Hardwood floors Fireplace insert New custom blinds being installed Soaking tub Washer and Dryer in unit Concierge Building 1 car parking Water, sewer, garbage paid by owner NO SMOKING \$1,325 per month 1 year lease \$1,500 security deposit \$500 additional dp for approved pet (under 25lbs) Equal Housing Opportunity. To apply for free, go to [NoAppFee.com](http://NoAppFee.com) today!





**\$1179 / 1br - 619ft<sup>2</sup> - Bridgeton Apartments - Just the place  
you're looking for! (Portland - Columbia River)**



10445 NE 6th Drive and 10457 NE 6th Drive at N Marine Dr  
([google map](#))

1BR / 1Ba **619**ft<sup>2</sup> available now

cats are OK - purrr  
apartment  
w/d in unit  
carport

# **Bridgeton Apartments**

**10445 NE 6th Drive and 10457 NE 6th Drive,**

**Portland, OR 97211**

**Pricing:** - \$1179 / month\*

**Bedrooms:** 1 - 2 **Bathrooms:** 1 - 2 **Footage:** Call

## **Features in this apartment home:**

- -- One block from the Columbia River
- -- Near recreation facilities
- -- Gated community, with fob key access
- -- Fencing and landscaped walls surround the property
- -- Near sporting venues
- -- 53 parking spaces and 31 covered parking spaces
- -- Hedges provide natural privacy
- -- Near Delta Park

## **Amenities at our property:**

- -- Carport(s)
- -- Onsite Management
- -- Public Transportation
- -- Gated Community

## **About the community:**

- Situated on Marine Drive, Bridgeton Apartments is a quiet community located near Portland's largest employers and greatest recreation facilities. The community is comprised of two three-story buildings that offer a mix of studio, one bedroom and two bedroom apartments. Bridgeton is a gated community with a combination of lush landscaping, fencing and natural hedges that provide both privacy and security.

\*Prices are subject to change without notice.

EQUAL HOUSING OPPORTUNITY



**\$1850 / 3br - 2591ft<sup>2</sup> - New Home For Rent - with beautiful  
Columbia River location(Portland (Columbia City) Oregon)**



**3BR / 2.5Ba 2591ft<sup>2</sup> available now**

dogs are OK - woof  
apartment

1655 3rd Street([google map](#))

1655 3rd Street  
Columbia City, Oregon 97018

Now accepting applications. Spacious living with modern features. Independent/detached home in a 6 home community in Columbia City. Tenant responsible for all utilities !

- \* 3 bedrooms
- \* 2.5 baths
- \* 2591 sq.ft. new home + 484 sq.ft. garage
- \* Large green space
- \* Spacious bonus room with fireplace
- \* Sliding doors leading to deck with view of Columbia River
- \* Island in kitchen (perfect for a cook and entertaining)
- \* Modern stainless steel appliances in kitchen
- \* Granite kitchen counter-tops
- \* Huge Master bedroom with, walk in closet, en-suite bath, and view of river
- \* Skylights
- \* Washer/Dryer Hookup
- \* Tons of storage
- \* Abundant natural light
- \* Attached spacious garage
- \* Recess lighting
- \* Built in 2007
- \* Great insulation

~~~~~  
Rent: \$1850

Security Deposit: \$1850

Application: \$46 (non-refundable)

Please ask Property Manager about Pet Policy

Contact Connie at [show contact info](#) to apply and/or to schedule viewings of the property

- ~~~~~
- 2 miles from St.Helens
  - 30 mins to Portland
  - 30 mins to Hillsboro
  - Walking distance to Columbia River

## \$1025 Studio apartment near Montgomery Park



**0BR / 1Ba available now**

cats are OK - purrr  
dogs are OK - woof  
no smoking  
apartment  
laundry on site  
street parking

\*\*\* Limited Time Only If application is received at time of showing and approved for move-in, Application Fee will be credited back\*\*\*\*

Great location near NW 23rd! The Elysian Garden Apartments are located at 2651 NW Upshur.

We currently have a large 450 square foot apartment home available. This unit has hardwood floors, a full kitchen and large windows for ample natural light. For your convenience there are two laundry rooms on site. Pets are welcome with a security deposit and \$25 per month pet rent.

Located just minutes from shopping and restaurants on NW 23rd and both Forest and Macleay Parks. Easy access to I-405, downtown, bus lines #15 & 77 and the NS streetcar line on 23rd and Lovejoy.

Application and screening fee is \$45 per applicant.

For additional information, Screening/Application information or to schedule a viewing please respond to this ad by email or contact the number above.

Thank you for your interest!



**\$945 / 550ft<sup>2</sup> - Gleaming Vintage Goose Hollow Studio  
Apartment! (1424 SW Montgomery Street #304)**



**0BR / 1Ba 550ft<sup>2</sup> available may 20**

apartment  
laundry on site  
street parking

1424 SW Montgomery Street

# Gleaming Vintage Goose Hollow Studio Apartment!

## Property Address

1424 SW Montgomery Street #304 | Portland, OR 97201

Available: 05/20/2016

Available 5/20! Studio, 550sf. Gorgeous vintage unit on third floor of 1926 Goose Hollow apartment building. This unit is flooded with light, has hardwood floors and tons and tons of storage space via original built-ins in oversize closet. Bathroom with hexagon tile has original built-in vanity. Full kitchen and dining room.

Enjoy everything Portland has to offer from this location seconds to all the nightlife, bars, and restaurants downtown.

Electric heat, shared coin operated laundry. Utility co-payment of \$50.00 per month for water, sewer and garbage. Bike storage. Private storage lockers available. Street parking only, permit available through City of Portland. Walking distance to PSU and downtown! Sorry no pets. Lease terms 1 year. Schools: Ainsworth (K-5), West Sylvan (6-8) and Lincoln (9-12)

PPI~Portland's Professional Property Management Experts!

Directions: From N I-405 take Salmon St/PGE Park exit 2A. Slight right on SW 14th Ave. 1st right on SW Salmon St. 1st right on SW 13th Ave. Slight right towards I-5/I-84/I-405 S. Slight right on SW Montgomery St. Property is on left.

Information deemed reliable but not guaranteed.

## Amenities

- built ins
- wood floors
- no pets
- coin-op laundry

## Details

- Beds/Baths: 1.0BA
- Square Feet: 550

## Rental Terms

- Rent: \$945.00
- Available: 05/20/2016
- Application Fee: \$50.00
- Security Deposit: \$945.00

**\$2365 / 2br - 917ft<sup>2</sup> - PERFECT LOCATION! 2BD/2BTH ON SE DIVISION WAITING FOR YOU! (Division, SE Portland,Kerns,Richmond,Mt. Tabor)**



3150 SE Division St

**2BR / 2Ba 917ft<sup>2</sup> available now**

- cats are OK - purrr
- dogs are OK - woof
- no smoking
- wheelchair accessible apartment
- w/d in unit
- off-street parking

Spring is here and the specials are blossoming!!

Stop by today to receive all the specials D street Village has to offer!!

D Street Village has the most epic views of the Portland and Mt. Hood! These new apartments give you the balanced life you desire. Nestled in one of the best SE neighborhoods, D Street is located in one of the most desirable, destination neighborhoods in all of Portland.

D Street Village is the home you have been looking for and the Division Street neighborhood offers over 40 restaurants within blocks of your new home. You could eat out every night at Pok Pok, TidBits food carts, Bollywood Theater, just to name a few. Conveniences like New Seasons, Fred Meyer, Safeway, Imperial Bottle Station, and easy access to public transportation make the neighborhood so walkable.

One Bedroom homes starting at \$1555.00

Two Bedroom/Two Bathroom homes starting at \$2350.00

Apartment Features:

- Subway tile black splash
- Stainless steel kitchen appliances
- Washer and Dryer in every home
- Air conditioning
- Oversized windows with spectacular views
- Wall Plugs with USB Ports
- Built in storage in every unit
- And More!

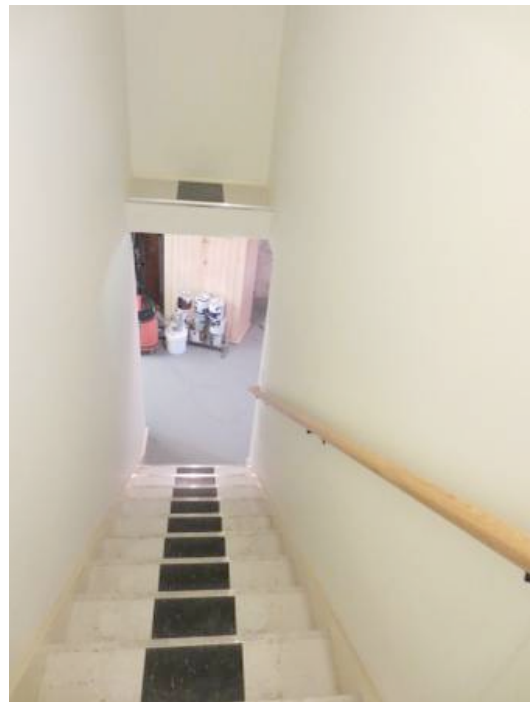
Building Features:

- ENERGY STAR appliances
- Water efficient fixtures
- LED lighting
- Low VOC paints and finishes
- Electric vehicle charging stations
- Storm water detention
- Onsite office and maintenance staff
- Top floor outdoor patio with grill and Fire Pit
- Fitness Center
- FREE bike storage
- Bike repair station
- Dog washing station
- And plenty more!

This third floor, two bedroom, two bathroom, 917 square foot apartment features large corner windows for a stunning view of the Richmond neighborhood. This SE exposed home is great for that morning light to start your days perfectly and offers a great view of Mt Hood.



**\$2700 / 3br - 1850ft<sup>2</sup> - Clinton/Division (4219 S.E. Clinton)**



4219 S.E. Clinton

**3BR / 1Ba 1850ft<sup>2</sup> available now**

cats are OK - purrr

house

w/d in unit

off-street parking

Clinton/Division 4219 S.E. Clinton \$2700

1915 Craftsman home, 3bd/1 bath with stunning oak floors. 1850 sqft

Gorgeous living room with fireplace, formal dining room

Big updated kitchen with dishwasher and gas stove.

Beautiful bathroom with claw foot and hexagon tile

Two generous bedrooms on the main

Larger lower level bedroom, office, den.

Yard, basement laundry off street parking

High Five Properties

e-mail inquiries preferred and responded to quickest.

Cat okay but no dogs please

**\$2300 / 3br - 1600ft<sup>2</sup> - Beautiful 3bd near Division**



**3BR / 1Ba 1600ft<sup>2</sup> available now**

- no smoking
- house
- w/d in unit
- detached garage

3848 se grant ct.

A great 3 bedroom 1 bathroom 1911 American Foursquare with original built-ins.

- Large dining and living room, bedroom and bathroom on main floor.
- Updated stainless steel appliances in kitchen with eating area.
- A bonus room or office and 2 bedrooms on the second floor.
- A full and clean basement with washer and dryer and a lots of room for work area and storage.
- Nice clean oversized garage.
- No backyard, small patio area out back and small lawn along the side and front of house, easy to maintain.
- On corner of Grant Ct. and Cesar Chavez with updated windows, you'd be surprised how quiet it is inside.
- Great location a couple blocks from Division near some of the best restaurants in Portland and short walk to Hawthorne near grocery stores, restaurants, cafes, bars, shopping, and parks.

Come by the house it's beautiful!

If you want to see the house or have any further questions please email this posting.

12 month lease, month to month after that

Rent is \$2300.

\$2300 Security Deposit.

\$40 screening fee per applicant.

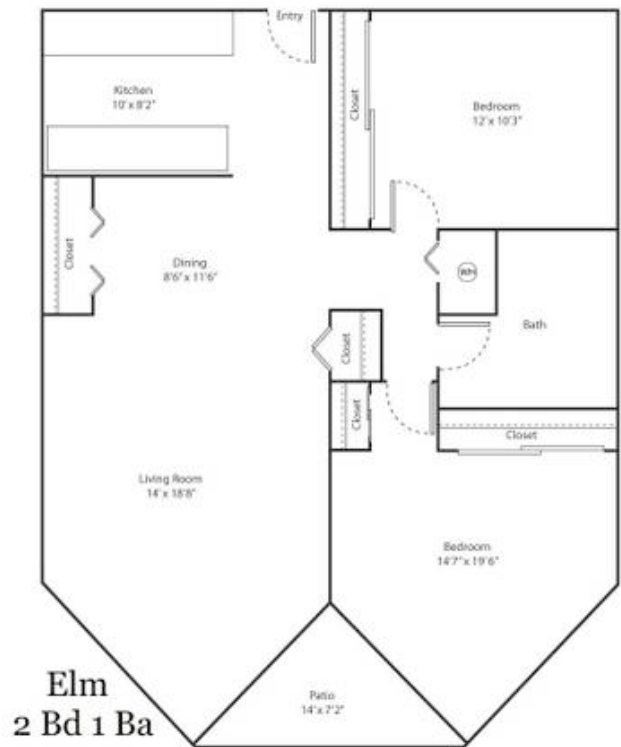
No smoking.

Tenant pays all utilities and takes care of basic yard work.

Excellent Credit required.



**\$1200 / 2br - 980ft<sup>2</sup> - Spacious 2 Bedroom, Available 5/16**



8585 SW Canyon Lane  
2BR / 1Ba 980ft<sup>2</sup> available may 16

cats are OK - purrr  
dogs are OK - woof  
apartment  
laundry in bldg

\$1200 - \$1300 (prices are subject to change). Spacious two bedroom, one bath apartment home is 980 sq. ft and features a spacious and welcoming floor plan as well as on-site amenities. You will be wowed by the extremely accessible location: Close to everything!

Call today [show contact info](#)

Craigslist email will not let me respond. Please either call or respond from your personal email.

Floor Plan/Unit Amenities:

Spacious closets

Patio/Deck

Electric Heating

Garbage Disposal

Dishwasher

Cable Ready

Property Amenities:

\* Pet Friendly

\* Pool

\* Sauna

\* Fitness Center

\* On-Site Laundry Rooms

West Slope Terrace

8585 SW Canyon Lane

Portland, OR 97225

**\$2650 / 3br - 1800ft<sup>2</sup> - Alameda/Beaumont Beauty-Cutie**

**(Alameda/Beaumont)**



4111 NE Cesar Chavez

3BR / 1Ba 1800ft<sup>2</sup> available may 09

- dogs are OK - woof
- house
- w/d in unit
- detached garage

Newly refurbished Alameda/Beaumont house on very quiet neighborhood street (this is very much is the opposite Cesar Chavez in SE Portland). Great retro and classic features remain with important updates--including new high efficiency gas furnace, attic exhaust fans for summer cooling, new water lines, high quality/cushy new carpet, and newly refinished hardwoods. Three bedrooms, quiet/cozy finished basement family room, dining room, kitchen with eating nook, living room with fireplace, upstairs bedrooms with built-in furniture, garage, fenced yard, laundry w/ machines on site, den/home office. Very efficiently laid out house. Schools are Alameda, Beaumont and Grant. A short skip to Wilshire Park (the best dog park on the East Side), the Beaumont commercial strip, and Beaumont Middle School. Walking distance to New Seasons and Alberta. Available May 9. Do not disturb tenants; email questions and to pre-schedule showings. One dog ok with pre-approval and deposit.



**\$1595 / 2br - 1000ft<sup>2</sup> - Newly Renovated 2 Level Condo in Great SE Location near Reed! (SE Portland)**



**2BR / 1Ba 1000ft<sup>2</sup> available now**

cats are OK - purrr  
dogs are OK - woof  
no smoking  
condo  
w/d in unit  
off-street parking

4232 SE 39th Ave.



Available April 15th!

End Unit - 1000sf 2 level 2 bedroom newly renovated condo in great SE location! Laminate wood flooring. Granite counters in kitchen w/stainless steel appliances including refrigerator. Stacked front loading Washer & Dryer included in unit. Upstairs bedrooms and bath. Private parking lot with designated parking space. Secure storage area with designated closet.

4232 SE 39th Ave. Portland OR 97202

Rent: \$1,595

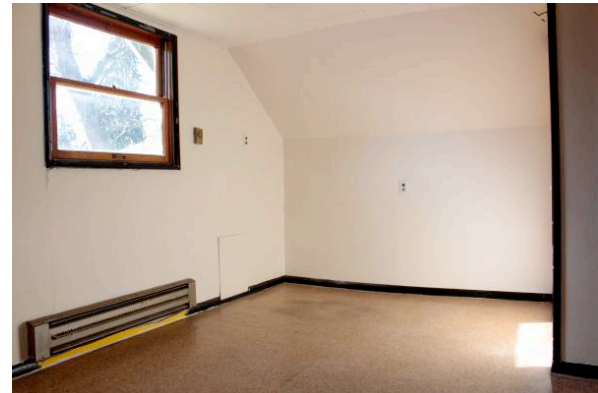
Security Deposit; \$1,595

Application Fee: \$45

No Smoking

Pet considered with additional deposit

**\$2795 / 5br - 1492ft<sup>2</sup> - 5 Bedroom Woodstock Home For Rent**  
**(Woodstock Neighborhood)**



**5BR / 1.5Ba 1492ft<sup>2</sup> available now**

no smoking  
house  
w/d hookups  
street parking

6322 SE Woodstock Blvd.

Large home with 5 bedrooms with large living room and dining room areas. Lots of windows for great interior lighting. Within walking or bicycling distance to New Seasons, restaurants and Reed College.

5 bedrooms

- 1.5 bathrooms
- Off Street Parking, Basement with lots of storage
- Walking distance to New Seasons
- Lease Duration: 1 Year
- Rent: \$2795
- Security Deposit: First & last months rent.
- No Pets/ No Smoking

**\$1775 / 3br - 1100ft<sup>2</sup> - Move in ready. 3 bedroom house in the Woodstock area.**



4438 se Nehalem St.

3BR / 1Ba 1100ft<sup>2</sup> available may 01

cats are OK - purrr  
no smoking  
house  
w/d in unit  
off-street parking

I have a beautiful 3 bedroom, 1 bathroom house near Reed College and Woodstock area. Newly remodeled kitchen and bathroom. The garage is turned in to a large bedroom with a walk in closet. A new large deck in back. Garbage service in cluded. start or grow your family here. call or email if you want to come and look.



**\$1370 / 2br - 900ft<sup>2</sup> - 2/1 For Rent, Close-in SE Secluded Ranch-style Duplex w/Detached Garage Experien (Creston-Kenilworth)**



3720 Southeast 33rd Avenue  
([google map](#))

**2BR / 1Ba 900ft<sup>2</sup> available now**

apartment  
w/d in unit  
off-street parking

Close-in SE Secluded Ranch-style Duplex w/Detached Garage Experience SE Portland living at it's finest in this ideally located 2 Bed, 1.5 Bath duplex home with lots of charm and amenities. Features include: - Laminate floors in main; carpeted bedrooms - Spacious living room with wood paneled walls, large picture window, and wood burning fireplace with ornate stone mantle - Darling kitchen with wood cabinets, dishwasher, and electric range - Dining area off kitchen with sliding glass doors leading to outside - W/D hookups in kitchen utility closet - Cute period tile in bath - Secluded back patio - Detached 1 car garage with automatic door opener - Water, sewer and garbage included - Located between SE Powell and Gladstone with tons of dining and entertainment options. Super fast commute to SE Division, Clinton St, Hawthorne, Reed College, Woodstock, and Downtown Portland. - 20 Min walk to new Orange MAX line! -No pets preferred (RLNE2138763)

**\$1100 / 1br - 500ft<sup>2</sup> - Walk to Lloyd Center (United States)**



1BR / 1Ba **500ft<sup>2</sup>** available aug 01

705 NE 20th at NE 20

no smoking  
apartment  
laundry on site  
street parking

Charming 1930 SAN FRANCISCO STYLE COURT YARD 1 bedroom Apartment unit. Well maintained exterior with contemporary interior. Drive by the Gray Harbor Apartments and if interested. Call # [show contact info](#) Terms - 1 year lease then converts to month to month rental agreement. \$1100/ month - first/last month plus \$500 refundable security deposits. Nice floor plan with nice hardwood floors, high ceilings, small closets, kitchen with lots of cabinets & counter space. Appliances included, Range, refrigerator. The apartment is fully insulated, new windows with economical gas heats. The laundry room has a coin operated Washer & dryer, with additional storage space locker for each unit. The court yard is landscaped with semi-private cement entry landings with security lighting. Located in a good neighborhood. There is off street parking and walking distance to: Bus line routes, MAX light rail station at Lloyd center (, Grocery stores, Coffee shops, and eateries. Great for commuting, 2 blocks to Sandy Blvd and close to I 84 exits. Minutes driving to: Broadway, Lloyd Center, Downtown Portland. Garbage, hot & cold water included. Available Now. Call [show contact info](#) Terms - 1 year lease then converts to month to month rental agreement. \$1100/ month - first/last month plus \$500 refundable security deposits.



**\$2000 / 3br - 900ft<sup>2</sup> - Great Spacious Apartment with large deck**  
**(2226 NE Weidler St. #2-Walk to Lloyd Ctr)**



NE Weidler at NE 22nd

**3BR / 2Ba 900ft<sup>2</sup> available now**

cats are OK - purrr  
dogs are OK - woof  
no smoking  
apartment  
laundry on site

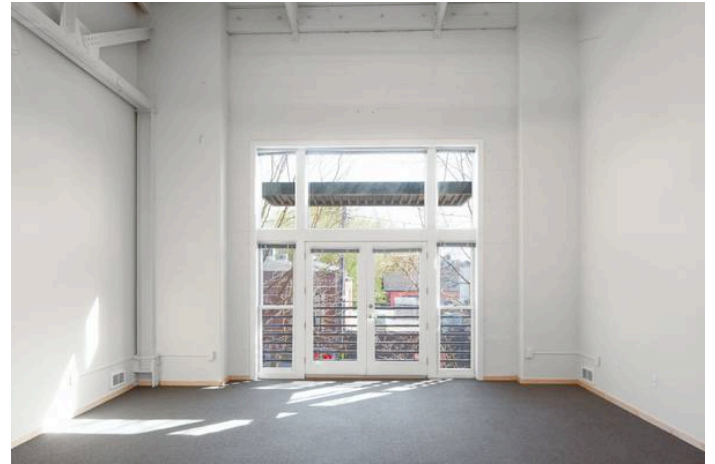
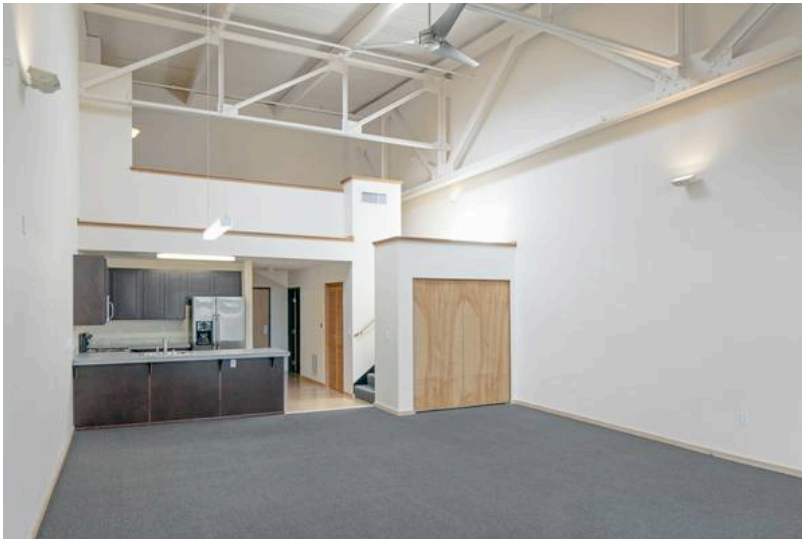
off-street parking



This is a large updated 3 bedroom, 2 bath apartment with wood floors.  
This would be a great apartment to share.  
It has lots of light streaming in through large windows.  
There is indirect lighting in the kitchen with a dining area and an extra-large private deck through sliding glass doors off the kitchen.  
The bedrooms are carpeted.  
Energy-saving insulated thermal-pane windows with screens throughout and insulated front door.  
Large mirrored closets in bedrooms.  
Ceiling fans with lights in kitchen, living room and the three bedrooms to keep you cool in summer and circulate air in winter.  
You pay electricity and we pay for water, sewer and garbage.  
Free storage area available and free off-street parking space big enough for 2 cars.  
Coin-operated laundry room on site.  
Selected pets OK with renter's insurance.  
Located in a VERY DESIRABLE area--walking distance to Lloyd Center Mall and to Broadway Street with all its shops, restaurants and coffee spots. Close to bus and short ride to downtown or ride MAX. Close to Fred Meyer and Safeway.  
Good biking area! A short ride to Hawthorne, Mississippi St or Alberta Arts area.  
There is a \$25.00 application fee for each adult over 18 and the deposit is refundable. No last month's rent.

Available Now---Call for viewing appointment-- [show contact info](#)

**\$2150 / 1br - 1486ft<sup>2</sup> - ~~~Spacious, amazing loft!~22 ft.  
ceilings~1486 sq. ft.~~~(Belmont/Morrison)**



3340 SE Morrison St.  
([google map](#))

**1BR / 1Ba 1486ft<sup>2</sup> available now**

cats are OK - purrr  
dogs are OK - woof  
no smoking  
wheelchair accessible  
loft  
w/d hookups  
detached garage

Location: Belmont/Sunnyside/Hawthorne districts

Welcome to Belmont Dairy Apartments and Lofts!

Our luxurious New York style, traditional Loft have a lot to offer: Recently updated hardwood flooring in the kitchen and entry, 22 ft. ceilings, stainless steel appliances, French doors, mezzanine level, large skylights, A/C, ample storage, w/d hookups, and cable/internet ready! Great for entertaining and great for daily living!

Loft Specifics:

Rent: \$2,150/month

Deposit: Equal to half or 1 month's rent.

Lease Options: 6-12 month lease

Application Fee: \$42 per person

Pet deposit: \$300 per pet, \$10 per mo. in pet rent per pet

Sq. Ft.: 1486

Height: 22 Ft. ceilings

Mezzanine level (upstairs) with 2 large closets!

Ample storage space!

NEW appliances/carpet/cabinetry - fully renovated!

W/D hookups in loft and laundry facility on site as well.

\* We are PET FRIENDLY! \*

\* 100% non-smoking building!\*

This loft will rent very quickly... So make your appointment to view our lovely community now!

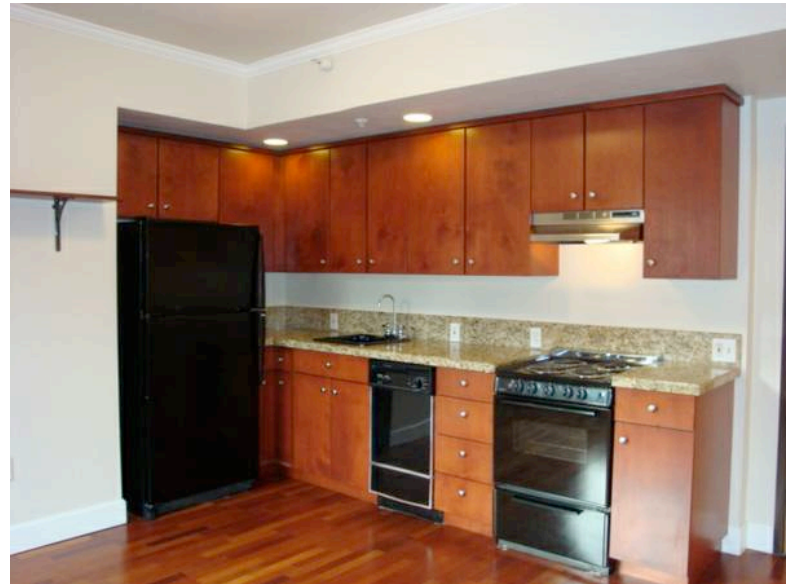
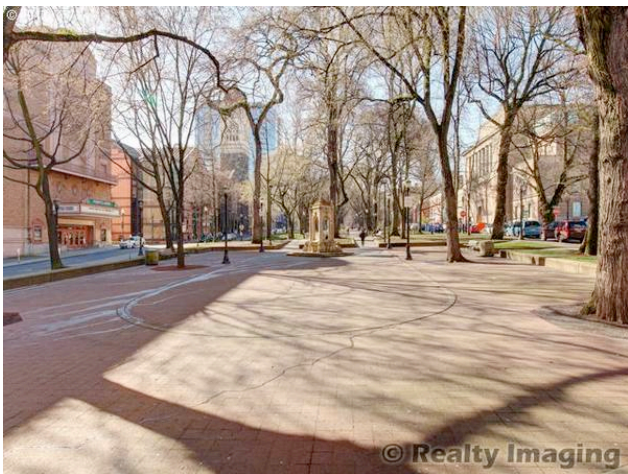
Tours are by appointment only. Please email us to schedule an appointment, or call us at: [show](#)

[contact info](#) We look forward to hearing from you!

\*Please have photo ID ready and a check or money order for \$42 with you should you desire to apply. Cash is not accepted.

For more information please visit our website: [www.belmontdairy.com](http://www.belmontdairy.com)

**\$1195 / 350ft<sup>2</sup> - ROOSEVELT CONDOMINIUM ` Studio ~  
STUNNING URBAN LOFT(1005 SW Park Ave)**



Park Avenue at Salmon Street

**0BR / 1Ba 350ft<sup>2</sup> available jun 01**

- no smoking
- flat
- laundry in bldg
- no parking



## **Studio/1BA Condo - Portland**

**1005 SW Park Ave, Portland, OR 97205**

**\$1,195/mo**

### **KEY FEATURES**

**Sq Footage:** 350 sqft.

**Bedrooms:** Studio

**Bathrooms:** 1 Bath

**Parking:** None

**Lease Duration:** 1 Year (See Details Below)

**Deposit:** \$1,100

**Pets Policy:** No Pets Allowed

**Laundry:** Shared

**Property Type:** Condo

### **DESCRIPTION**

Elegant historic flat in exciting downtown cultural district. Cozy studio with one bath light and bright third floor unit. Nine foot ceilings, crown moldings, cherry hardwood floors, travertine and tile bath. Cherry kitchen cabinetry with granite countertops, and all kitchen appliances. Rent includes heat, hot water and electricity. Central laundry available in building.

No pets/No smoking.

Resident responsible for HOA move-in and move-out fees.

For a complete list of available properties, visit our website at [www.aetnaproperties.com](http://www.aetnaproperties.com)

### **RENTAL FEATURES**

- Living room
- Range / Oven
- Refrigerator
- Dishwasher
- Heat: forced air
- Double pane / Storm windows
- Hardwood floor
- Tile floor
- Granite countertop
- High / Vaulted ceiling

### **COMMUNITY FEATURES**

- Vintage building
- Loft layout
- Elevator
- Secured entry
- Disability access
- On-street parking

### **LEASE TERMS**

One Year Lease / Application Fee \$45

### **ADDITIONAL LINKS**